

TURBINE FLOW METER

TURBINE FLOW METER

MODEL : CT Series

DESCRIPTION

CT Series : Turbine Flowmeter for Liquids
They are based on the principle of the Woltmann rotating vane meter. They are designed to measure liquid. This arrangement permits the measurement of very low flow rates in liquid under a variety of operating conditions with high pressure.

FEATURES

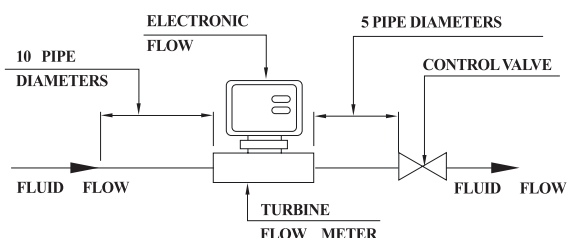
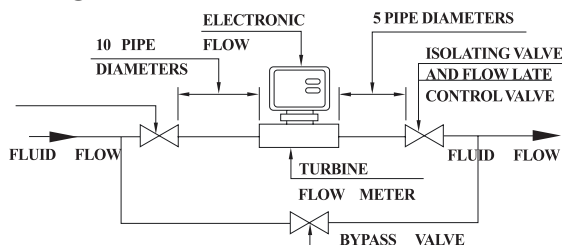
- Flow rate/ total rate/ accumulated rate
- Output : Pulse / 4-20mA /Alarm /communication (except CT-4/5)
- High pressure
- Ex d IIB T6 enclosure class - (except CT-4)



FLOW CHART

SIZE		LIQUID (m ³ /H) FLOW RATE	Length (mm)
10A	3/8B	0.04 - 0.25	120
15A	1/2B	0.4 - 4	150
20A	3/4B	0.6 - 6	150
25A	1B	1.0 - 10	200
32A	1 1/4B	1.5 - 15	200
40A	1 1/2B	2.0 - 20	250
50A	2B	4.0 - 40	250
65A	2 1/2B	5.0 - 50	250
80A	3B	10.0 - 100	300
100A	4B	20.0 - 200	330
125A	5B	25.0 - 250	330
150A	6B	30.0 - 300	330
200A	8B	50.0 - 500	360
250A	10B	100.0 - 1000	360

NOTE

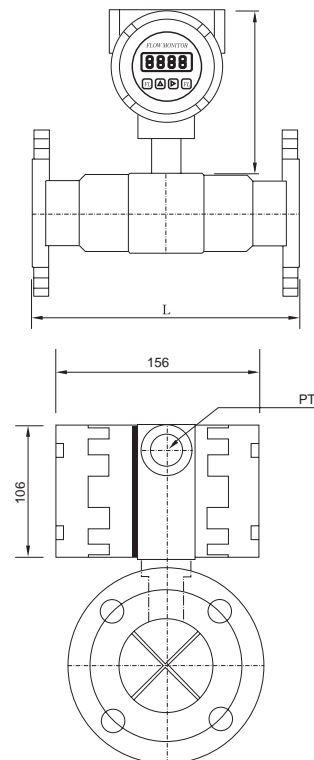


SPECIFICATION

* MEASURING	Liquid
* METER SIZE	10A(3/8") ~ 250A(10")
* MATERIAL	Body : SUS 304 / SUS 316 / SUS316L Rotor : SUS 430 Indicator : AL Flange : SUS 304 /SUS 316/ SUS 316L Other Materials on Request
* PRESSURE RATING	10 kgf/cm ² (Standard) Option : 300 kgf/cm ²
* TEMPERATURE	Operation : -20~ 100 °C (Max : 120 °C) Option : 200 °C
* CONNECTION	Flange Connection (JIS / ANSI / DIN / other) Screw Connection Clamp Connection
* ACCURACY	+/- 1.0% of FS
* REPEATABILITY	+/- 0.1%
* DISPLAY	2-LINE 8 Digit LCD
* OUT PUT (Except CT-4/5)	Alarm(Rate, Total) / 4-20mA(non isolated) /Pulse(open collector) Option :Communication(RS-485)
* POWER SUPPLY	DC 24V (4wire) AC 110-220V (50~60Hz) Battery (Lithium) - none output

MATERIAL

PART LIST	MATERIAL		
	A	B	D
Body	SUS304	SUS316	SUS316L
Flange	SUS304	SUS316	SUS316L
Rotor Support	SUS316	SUS316	SUS316
Rotor	SUS 430		
Rotor Shaft	Tungsten Carbide		



DIMENSION

ORDERING CODE



BODY MATERIAL

- A SUS 304
- B SUS 316
- C SUS 316L
- O OTHERS

CONNECTION

- J JIS 10K
- A ANSI 150#
- D DIN PN16
- P SCREW :PT
- N SCREW :NPT
- C CLAMP
- O OTHERS

METER SIZE

10	10A(3/8")	40	40A(1-1/2")	125	125A(5")
15	15A(1/2")	50	50A(2")	150	150A(6")
20	20A(3/4")	65	65A(2-1/2")	200	200A(8")
25	25A(1")	80	80A(3")	250	250A(10")
32	32A(1-1/4")	100	100A(4")	O	OTHERS

POWER

- 2 DC POWER (DC 24V) - (Ex-proof)
- 3 AC POWER (AC 110-220V , 50~60Hz) - (Ex-proof)
- 4 BATTERY (Lithium 3.6V) - with square controller -(No Ex-proof)
- 5 BATTERY (Lithium 3.6V) - (Ex-proof)

TURBINE FLOWMETER (For Liquid)



CT - 2 / CT - 3
(Ex-proof)



CT - 4



CT - 5
(Ex-proof)